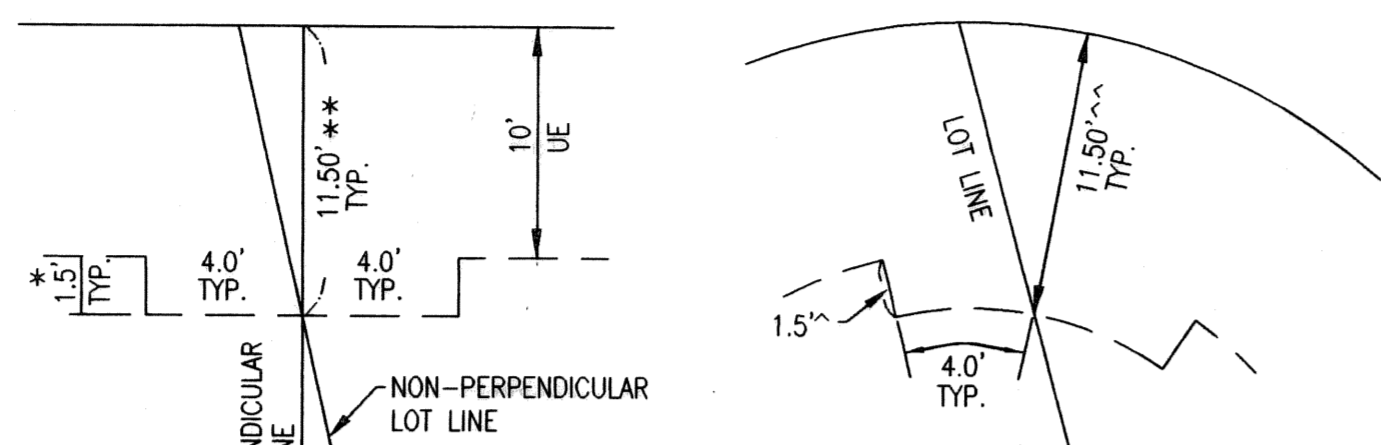
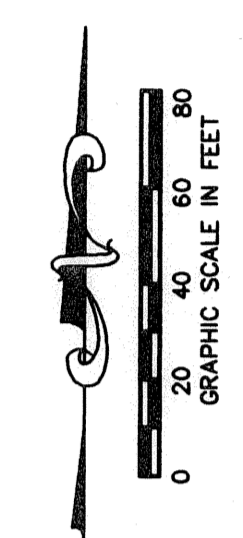
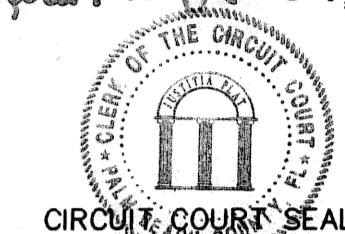


# MIRASOL PARCEL TEN

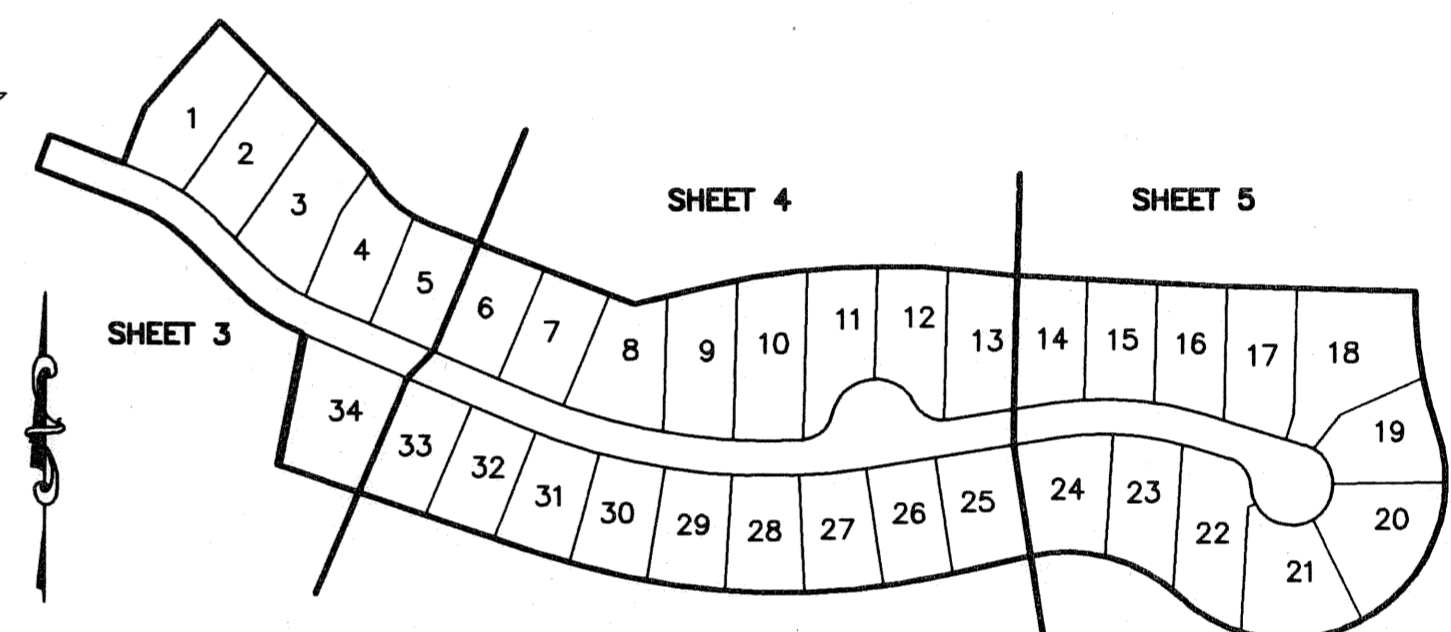
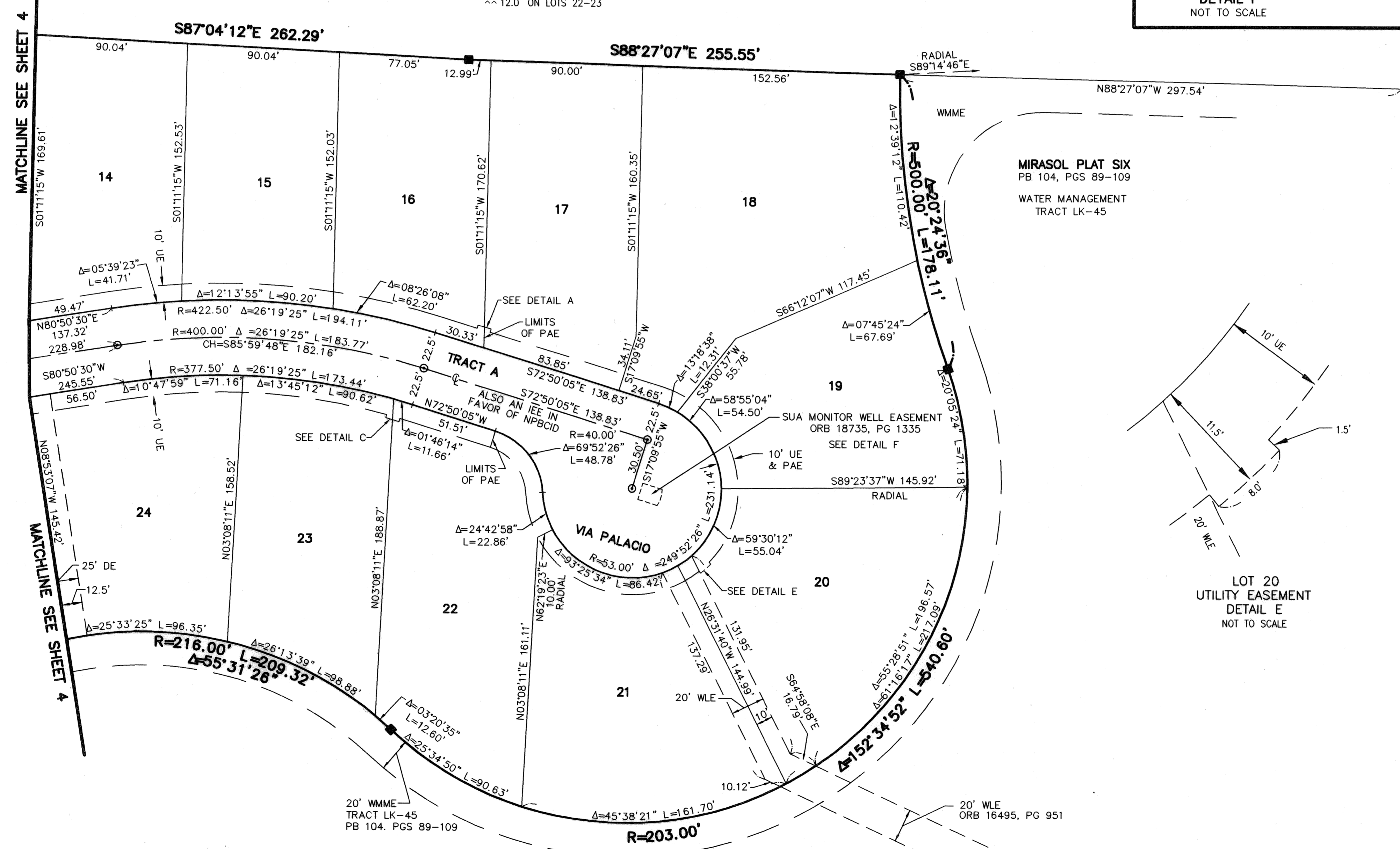
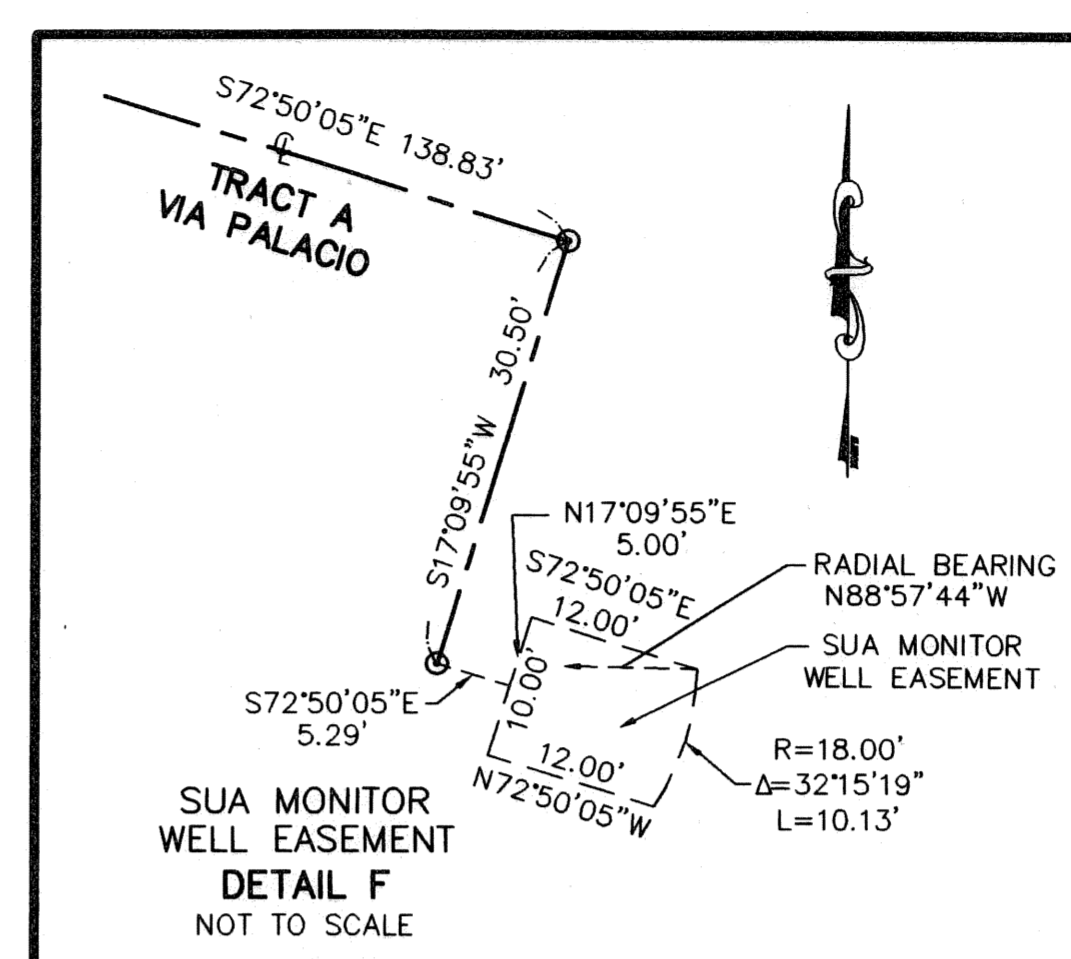
BEING A REPLAT OF TRACT 10, MIRASOL PLAT SIX, AS RECORDED IN PLAT BOOK 104, PAGES 89 THROUGH 109 OF THE PUBLIC RECORDS OF PALM BEACH COUNTY, FLORIDA  
PART OF MIRASOL P.C.D.  
BEING IN SECTION 04, TOWNSHIP 42 SOUTH, RANGE 42 EAST, CITY OF PALM BEACH GARDENS, PALM BEACH COUNTY, FLORIDA  
SHEET 5 OF 5

191

STATE OF FLORIDA  
COUNTY OF PALM BEACH  
THIS PLAT WAS FILED FOR RECORD ON 11:15 am THIS 10th DAY OF January AD, 2005 AND DULY RECORDED IN PLAT BOOK 104 ON PAGES 187 AND 191  
SHARON R. BOCK,  
CLERK & COMPTROLLER  
By Manuel A. Gutierrez, D.C.

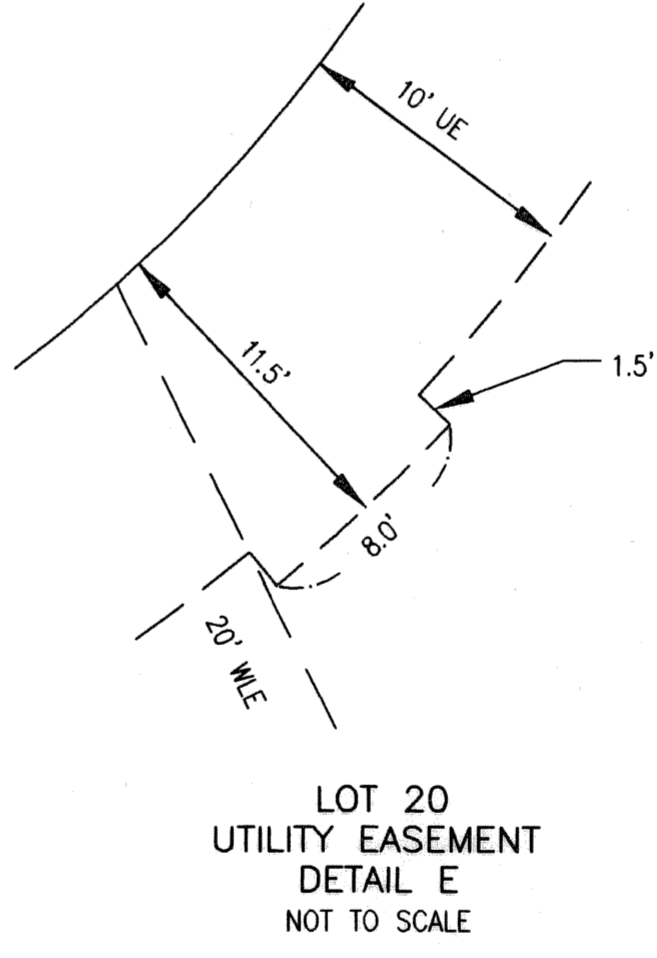


MIRASOL PLAT SIX  
PB 104, PGS 89-109  
TRACT P-A  
CONSERVATION ESMT  
ORB 13107, PG 1175  
ORB 14243, PG 768  
PARTIAL RELEASE PER  
ORB 14243, PG 807  
PART OF PRESERVE A  
SECOND AMENDMENT  
ORB 17915, PG 1934



**LEGEND**

Δ	CENTRAL (DELTA) ANGLE
CH	CHORD
DE	DRAINAGE EASEMENT
IEE	INGRESS-EGRESS EASEMENT
L	ARC LENGTH
NPBCID	NORTHERN PALM BEACH COUNTY IMPROVEMENT DISTRICT
ORB	OFFICIAL RECORD BOOK
PAE	PEDESTRIAN ACCESS EASEMENT
PG(S)	PAGE(S)
PCD	PLANNED COMMUNITY DEVELOPMENT
R	RADIUS
SUA	SEACOAST UTILITY AUTHORITY
UE	UTILITY EASEMENT
PM	PERMANENT REFERENCE MONUMENT
FM	FOUND LB 048 (4"x4" CONCRETE)
SM	PERMANENT REFERENCE MONUMENT SET LB 048 (4"x4" CONCRETE)
CP	PERMANENT CONTROL POINT
CL	SET LB 048 CENTERLINE
WLE	WATERLINE EASEMENT
WMME	WATER MANAGEMENT MAINTENANCE EASEMENT



REVISD 08-03-05  
CAD FILE:  
TAYLPA10\PA1ORP02

MIRASOL PLAT SIX  
PB 104, PGS 89-109  
WATER MANAGEMENT TRACT LK-45

THIS INSTRUMENT WAS PREPARED BY MANUEL A. GUTIERREZ, P.S.M. IN THE OFFICES OF MOCK, ROOS & ASSOCIATES, INC., 5720 CORPORATE WAY, WEST PALM BEACH, FLORIDA 33407.

SCALE:  
1"=40'  
P.A. NO.:  
99363.03  
DATE:  
MARCH, 2005  
DRAWING NO.  
42-42-04-114

FLORIDA L.B. NO. 48  
**MOCK • ROOS**  
ENGINEERS • SURVEYORS • PLANNERS  
5720 Corporate Way, West Palm Beach, Florida 33407  
(561) 683-3113, fax 478-7248

**MIRASOL PARCEL TEN**  
BEING A REPLAT OF TRACT 10, MIRASOL PLAT SIX, PLAT BOOK 104, PAGES 89 THROUGH 109 PART OF MIRASOL P.C.D. BEING IN SECTION 04, TOWNSHIP 42 SOUTH, RANGE 42 EAST, CITY OF PALM BEACH GARDENS, PALM BEACH COUNTY, FLORIDA